

# POWERBROOM™



A Shindaiwa exclusive, the PS262 PowerBroom™ features outstanding power and a solid-steel drive shaft to perform any sweeping chore. With three different brush or paddle choices, you are sure to have the tool you need to clean debris from nearly any surface.



## PS262

From construction sites and walkways to golf courses and roadsides, the PowerBroom™ completes any sweeping chore in a fraction of the time. All sweeping attachments are sold separately.

- Tool-less access, two-stage air filtration system dramatically increases ease of maintenance
- Cushioned front and rear grips for maximum comfort
- Accepts three different sweeping attachments for a wide range of tasks (sold separately)

Engine CC .....	<b>25.4</b>
Weight (lbs) .....	<b>13.3</b>
Fuel Capacity (fl. oz.).....	<b>20.6</b>



Shown with available 12-Fin Rubber Paddle

## POWERBROOM™ ATTACHMENTS

### 12-Fin Rubber Paddle

Rubber paddles prevent damage to soft surfaces, such as grass or artificial turf. Ideal for gravel or mulch cleanup.

Weight: 9.2 lbs.

Sweeping swath: 23 in.

Part # 99909-35000



### Aggressive Nylon Brush

Thicker bristles than the Nylon Brush for removing tougher debris.

Weight: 4.7 lbs.

Sweeping swath: 11 in.

Part # 80712



### Nylon Brush

For cleanup of light debris, such as loose dirt from hard surfaces. Also useful for spreading heavy liquids.

Weight: 7.9 lbs.

Sweeping swath: 20 in.

Part # 99909-11027

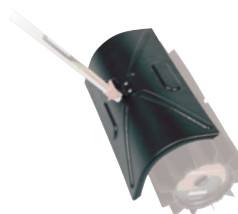


### Debris Shield

Provides added protection for the operator against liquids or light debris.

Fits all PowerBroom models and attachments.

Part # 99909-33021



### Replacement Brush

Part # 99909-11004

## PRODUCT SPECIFICATIONS

### CHAINSAW SPECIFICATIONS

(+) available in Canada only (f) available in US only \*without bar and chain \*\*clutch driven

Model	Engine Disp (cc)	Engine Disp. (cu. in.)	Starting System	Ignition System	Purge Bulb	Oiling System	Vibration Reduction	Available Bar Length (in.)	Fuel Cap. (fl. oz.)	Oil Cap. (fl. oz.)	Dry Weight* (lb.)
305s	30.5	1.86	i-30™	Digital	Yes	Automatic**	Yes	14	8.5	8.8	8.8
358Ts	35.8	2.19	Reduced Effort	Digital	Yes	Auto/Adjustable**	Yes	14, 16	11.2	8.2	8.0
402s	40.2	2.45	i-30™	Digital	Yes	Auto/Adjustable	Yes	18	13.9	9.5	10.1
492	50.2	3.06	Reduced Effort	Digital	No	Auto/Adjustable**	Yes	16 (+), 18, 20	16.6	9.5	10.6
591	59.8	3.65	Standard	Digital	No	Auto/Adjustable**	Yes	18 (+), 20	21.8	10.2	13.2
600sx	59.8	3.65	Standard	Digital	No	Auto/Adjustable**	Yes	20, 24, 27 (f)	21.8	10.2	13.7

### TRIMMER SPECIFICATIONS

Model	Engine Disp (cc)	Overall Length (in.)	Fuel Cap. (fl. oz.)	Cutting Swath (in.)	Dry Weight (lb.)	Starting System	Vibration Reduction	Tool-Less Air Filter Access	Drive Shaft
T235	21.2	70.2	14.2	20	11.9	Standard	Yes	Yes	Solid Steel
T262	25.4	70.4	20.6	20	12.4	Standard	Yes	Yes	Hollow
T262X	25.4	70.5	20.6	20	13.7	Standard	Yes	Yes	Hollow
T302	30.5	70.4	24	20	13.7	Standard	Yes	Yes	4-Layer Cable
T302X	30.5	70.5	24	20	14.3	Standard	Yes	Yes	4-Layer Cable

### BRUSHCUTTER SPECIFICATIONS

Model	Engine Disp (cc)	Overall Length (in.)	Fuel Cap. (fl. oz.)	Cutting Swath (in.)	Dry Weight (lb.)	Starting System	Vibration Reduction	Tool-Less Air Filter Access	Drive Shaft
C262	25.4	70.5	20.6	20	14.1	Standard	Yes	Yes	Solid Steel
C302	30.5	70.5	24	20	14.8	Standard	Yes	Yes	4-Layer Cable

### EDGER SPECIFICATIONS

Model	Engine Disp (cc)	Overall Length (in.)	Fuel Cap. (fl. oz.)	Dry Weight (lb.)
LE235	21.2	69.7	14.2	13.2
LE262	25.4	69.7	20.6	14.3

### BLOWER SPECIFICATIONS

\*with blower pipe

Model	Engine Disp (cc)	Dry Weight* (lb.)	Fuel Cap. (fl. oz.)	dB(A)	FLARED PIPE		ROUND PIPE		TURBO PIPE	
					Air Volume (CFM)	Max Air Speed (MPH)	Air Volume (CFM)	Max Air Speed (MPH)	Air Volume (CFM)	Max Air Speed (CFM)
EB252	25.4	8.6	18.6	70	-	-	453	170	-	-
EB262	25.4	9.8	20.3	70	428	180	456	172	-	-
EB600RT	58.2	22.7	62.0	70	-	-	517	216	-	-
EB633RT	63.3	26.2	67.6	74	-	-	651	233	-	-
EB770/RT	63.3	24.5/24.3	68.3	74	-	-	756	234	-	-
EB802/RT	79.2	25.1/24.9	68.3	76	-	-	695	210	618	243
EB854/RT	79.7	28.0/27.6	68.7	77	-	-	735	191	660	213
EB910/RT	79.9	26.7/26.4	83.8	80	-	-	1,110	220	-	-

### HEDGE TRIMMER SPECIFICATIONS

Model	Engine Disp (cc)	Blade Length (in.)	Shaft Length (in.)	Overall Length (in.)	Fuel Cap. (fl. oz.)	Dry Weight (lb.)	Vibration Reduction	Rotating Handle	Range	Exhaust Tube
DH232	21.2	22	-	41.9	12.5	11.0	Yes	Yes	-	Forward-facing
DH235	21.2	28	-	47	12.5	11.4	Yes	Yes	-	Forward-facing
HT232	21.2	28	-	41.5	12.5	10.2	Yes	-	-	Forward-facing
HT235	21.2	38	-	51.2	12.5	10.8	Yes	-	-	Forward-facing
FH235	21.2	21	42	79.4	14.2	12.5	Yes	-	-	-
AH262	25.4	21	59	96.1	20.6	14.3	Yes	-	135 Degrees - 10 Positions	-
AHS262	25.4	21	33	70.2	20.6	13.7	Yes	-	135 Degrees - 10 Positions	-

### MULTI-TOOL SYSTEM SPECIFICATIONS

Model	Engine Disp (cc)	Dry Weight (lb.)	Fuel Capacity (fl. oz.)
M235	21.2	9.8	14.2
M262	25.4	10	20.6

### POWERBROOM™ SPECIFICATIONS

Model	Engine Disp (cc)	Dry Weight (lb.)	Fuel Capacity (fl. oz.)
PS262	25.4	13.3	20.6

